



**APEX PRECISION  
MECHATRONIX PVT.LTD.**

303-308, Krishna Bhuvan Annex, 22-B, Govandi  
Station Road, Deonar, Mumbai - 400088,  
Maharashtra,  
INDIA.

**PHONE NO.**

61464444 / 9967550131

**EMAIL**

[sales@apexprecision.co.in](mailto:sales@apexprecision.co.in)

# MIST CLEANER YMC type (Water-soluble lubricant)



## FEATURES

- Centrifugal Force Technology and Filters (98% collection rate for 1 $\mu$ m)
- Standard model(Sales No. 1.)
- 20,000 units to Samsung(Vietnam) in 2014
- 2,000 units to LG(China) in 2017



## SPECIFICATIONS & DIMENSIONS



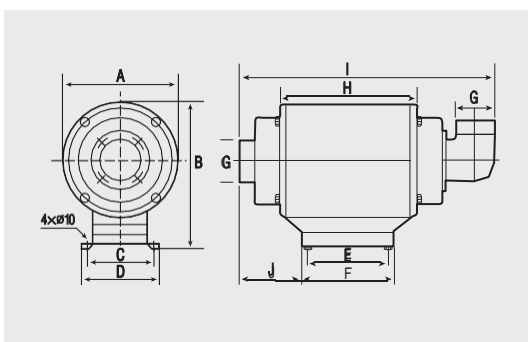
MODEL	YMC-300	YMC-350	YMC-400	YMC-420
POWER	3 Phase 220V / 380V / 440V (50/60Hz)			
Motor(Kw)	0.4	0.75	1.5	2.2
Ampere(A)	1.7/1.0/0.8	3.5/2.0/1.6	6.5/3.7/3.3	8.5/4.9/4.2
RPM	3,450			
Wind Flow Rate(m <sup>3</sup> /min)	7	12	25	30
Static Pressure(mmAq)	90	120	170	180
Noise(dB)	65 $\pm$ 2	68 $\pm$ 2	70 $\pm$ 2	70 $\pm$ 2
Collection Rate(%)	98% for 1 $\mu$ m			
Inlet, Outlet( $\phi$ )	100	125	150	150
Weight(kg)	25	33	55	59
Filter Material	POLYESTER			

\* When After Filter is mounted, wind flow rate will be decreased by 8%

\* Above specifications are based on 60Hz. When applying 50Hz air volume is reduced by 20%.

Unit : mm

MODEL	A	B	C	D	E	F	G	H	I	J
YMC-300	320	409	180	220	210	240	$\phi$ 100	322	680	188
YMC-350	365	454	180	220	210	240	$\phi$ 125	370	800	222
YMC-400	452	595	280	320	360	400	$\phi$ 150	480	973	235
YMC-420										



## AFTER FILTER

MODEL	YMC-300	YMC-350	YMC-400	YMC-420
D	$\phi$ 350	$\phi$ 350	$\phi$ 350	$\phi$ 350
H	330	330	500	500

### STANDARD PARTS

1. DRAIN HOSE : 3m
2. FLANGE : 1EA

### OPTION PARTS

1. AFTER FILTER

# MIST CLEANER YOC type (Oil lubricant)



## FEATURES

- Chip Separator(with Glass Filter)
- Collecting Chip and Mist
- Oil lubricant



## SPECIFICATIONS & DIMENSIONS

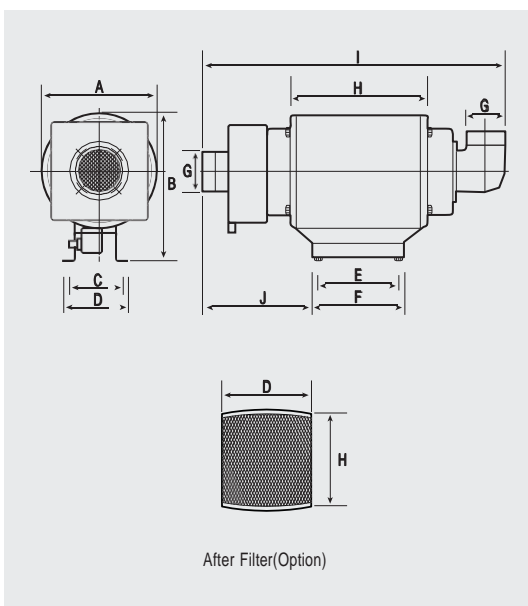


MODEL	YOC-300	YOC-350	YOC-400	YOC-420
POWER	3 Phase 220V / 380V / 440V (50/60Hz)			
Motor(Kw)	0.4	0.75	1.5	2.2
Ampere(A)	1.7/1.0/0.8	3.5/2.0/1.6	6.5/3.7/3.3	8.5/4.9/4.2
RPM	3,450			
Wind Flow Rate(m <sup>3</sup> /min)	5	10	20	25
Static Pressure(mmAq)	90	120	170	180
Noise(dB)	65±2	68±2	70±2	70±2
Collection Rate(%)	98% for 1μm			
Inlet, Outlet(ø)	100	125	150	150
Weight(kg)	30	37	64	67
Filter Material	POLYESTER			

※ When After Filter is mounted, wind flow rate will be decreased by 8%

※ Above specifications are based on 60Hz. When applying 50Hz air volume is reduced by 20%.

Unit : mm



MODEL	A	B	C	D	E	F	G	H	I	J
YOC-300	320	409	180	220	210	240	ø100	322	800	275
YOC-350	365	454	180	220	210	240	ø125	370	895	345
YOC-400	452	595	280	320	360	400	ø150	480	1,058	379
YOC-420										

## AFTER FILTER

MODEL	YOC-300	YOC-350	YOC-400	YOC-420
D	ø350	ø350	ø350	ø350
H	330	330	500	500

### STANDARD PARTS

1. DRAIN HOSE : 3m × 2ea
2. FLANGE : 1EA

### OPTION PARTS

1. AFTER FILTER

One body, two function

# The Electrostatic Precipitator

YHB presents a Electrostatic precipitator of the world has not seen before

A revolution of oil mist for Industrial & Tool M/C

Removable the **OilMist, Welding Hum, Mist, Dust and Smoke**



Option

- FILTER AIR CLEANING SYSTEM
- RAIL TYPE (Simple unit with removable filter)



Characteristics

- Low cost of maintenance  
(no need the filter replacement and reuseonly cleaning)
- High efficiency of collecting (Can collect the pm 2.5 below)
- Use none-water based lubricant  
(High efficiency of oil mist collecting)
- Low cost of Power  
(Can save the cost of power cause a liitle loss of wind power)
- Low vibration & noise  
(Improve of machining accuracy)
- Can collect the welding fume, gas smoke etc ...